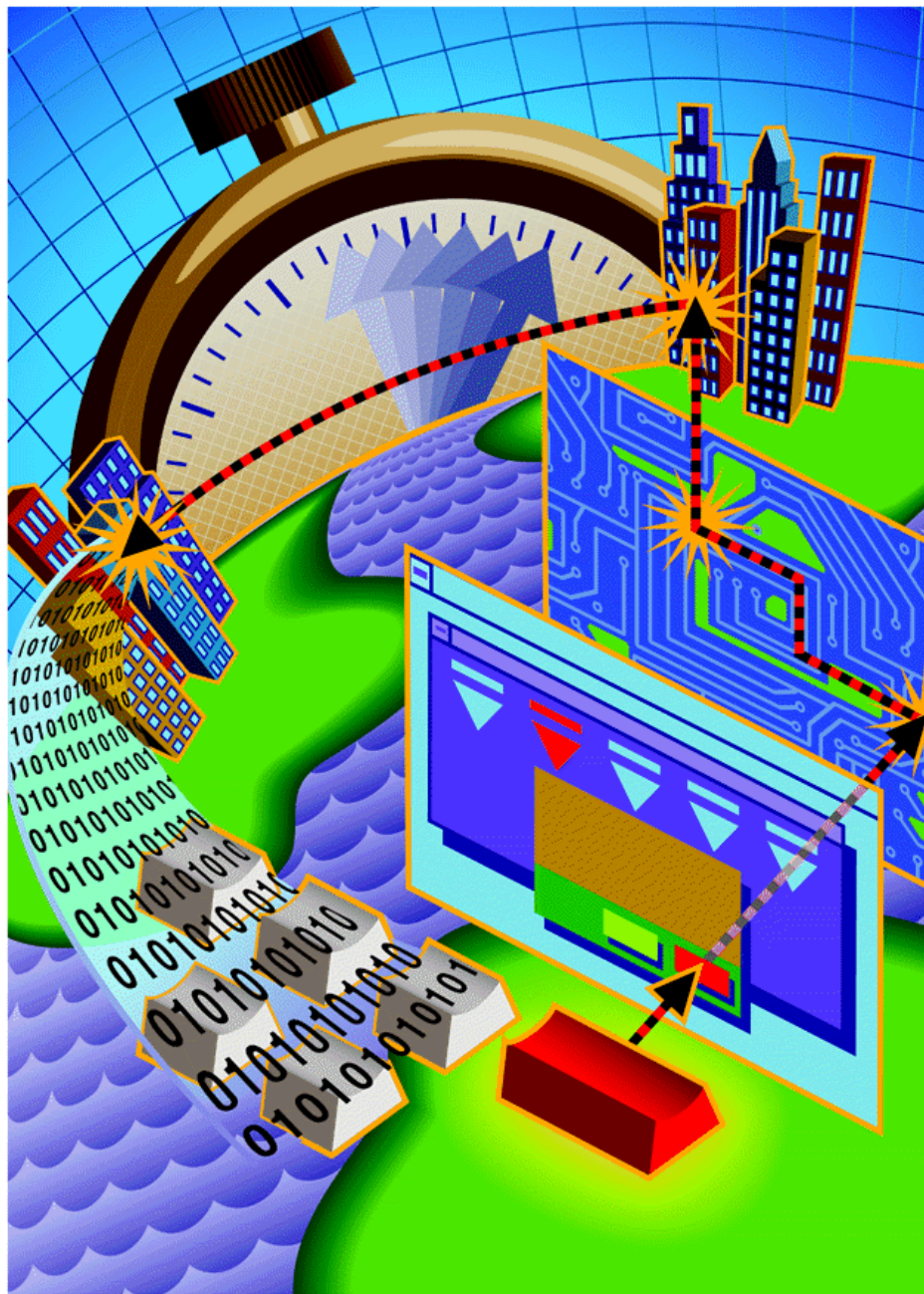


PATROL® Adapter for WBEM Installation Guide



PATROL[®] Adapter for WBEM Installation Guide

100016966

Version 1.0

March 31, 1999



This document is published by the BMC Software, Inc., Technical Publications Department.

Copyright © 1998 BMC Software, Inc. All rights reserved.

BMC Software, the BMC Software logos, and all other product or service names are registered trademarks or trademarks of BMC Software, Inc., in the USA and in other select countries. ® and ™ indicate USA registration or USA trademark.

PATROL SCRIPT LANGUAGE IS PROPRIETARY AND CONFIDENTIAL TO BMC SOFTWARE, INC.

PATROL® technology has been issued U.S. Patent No. 5,655,081.

Acrobat is a registered trademark of Adobe Systems, Inc. All other third-party logos and product/trade names are registered trademarks or trademarks of their respective companies.

RESTRICTED RIGHTS LEGEND

Use, distribution, or disclosure by the Government is subject to restrictions set forth in subparagraph (c)(1)(ii) of Rights in Technical Data and Computer Software clause in DFARS 252.227-7013.

BMC Software, Inc.
2101 CityWest Blvd.
Houston, TX 77042-2827
USA

Contacting BMC Software

USA and Canada

In the USA and Canada, you can contact BMC Software by telephone or fax:

Telephone	800 537 1813 (Product Support) 713 918 8800 (Houston metropolitan area)
Fax	713 918 1179

International

Outside the USA and Canada, you can contact a BMC Software international support center:

Asia/Pacific

BMC Software (Australia) Pty. Ltd.
3rd Floor
290 Burwood Road
Hawthorn Victoria
Australia
Telephone: (61) 3 9810 2010
Fax: (61) 3 9810 2030

Africa, Europe, Latin America, and the Middle East

BMC Software, Inc.
2101 CityWest Blvd.
Houston, TX 77042-2827
USA
Telephone: 713 918 8800
Fax: 713 918 1303

You can also call the BMC Software office in your country, if applicable. For a complete list of all BMC Software offices and subsidiaries anywhere in the world, see the BMC Software home page at <http://www.bmc.com>.

Contents

About This Guidev

Chapter 1 Preinstallation Requirements

 Installation Overview 1-2

 Installation Requirements 1-2

 System Requirements 1-2

 PATROL Component Requirement 1-3

 Installation Components 1-3

Chapter 2 PATROL Adapter for WBEM Installation

 Overview 2-2

 Installing on a Windows NT System 2-2

 Windows NT Installation Files 2-8

 Uninstalling on a Windows NT System 2-11

Index

About This Guide

This guide contains detailed information about the installation process for the PATROL[®] Adapter for WBEM and is intended for administrators, programmers and PATROL KM[™] developers using PATROL and Microsoft WMI/WBEM in a Windows NT environment.

How This Guide Is Organized

This guide is organized as follows. In addition, an index appears at the end of the book.

Chapter/Appendix	Title	Description
1	"Preinstallation Requirements"	presents the requirements and components for installing the PATROL Adapter for WBEM.
2	"PATROL Adapter for WBEM Installation"	provides details and procedures necessary for installing the PATROL Adapter for WBEM on a Windows NT system.

Related Documentation

BMC Software products offer several types of documentation:

- online and printed books
- online Help
- release notes

Online and Printed Books

The books that accompany BMC Software products are available in online (electronic) format and printed format. You can view online books with Acrobat Reader (provided at no cost) from Adobe Systems. You can also obtain additional printed books from BMC Software. This section provides details.

To Access Online Books

You can access online books from the documentation compact disc (CD) that accompanies your product or from the World Wide Web.

Accessing Books with Acrobat Reader

Online books are formatted as Portable Document Format (PDF) files. You can view them, print them, or copy them to your computer by using Acrobat Reader 3.0 or later.

Note

In some cases, installation of Acrobat Reader and downloading the online books is an optional part of the product-installation process. For information about downloading the free reader from the Web, go to the Adobe Systems site at <http://www.adobe.com>. For information about installing the reader from the documentation CD, see the **readme.txt** file on the CD.

Accessing Books on the Web

To access any online book that BMC Software offers, visit the support page of the BMC Software Web site at <http://www.bmc.com/support>.

Note

To use the support page, you must be a registered user or have a temporary user name and a password.

If you are a registered user, proceed as follows:

1. Click **Log in to Support**.
2. Enter your user name and password.
3. To view books for a particular product, click the product name in the Product Directory.
4. Select the book that you want to view.

If you are not a registered user, choose one of the following options:

- To register, click **Request UserID**, complete the form, and click **Send Request**.

- To request a temporary user name and a password, contact your BMC Software sales representative.

To Request Additional Printed Books

BMC Software provides a core set of printed books with your product order. To request additional books, go to **<http://www.bmc.com/support>**.

Release Notes

Release notes accompany each BMC Software product. Release notes provide up-to-date information such as

- updates to the installation instructions
- last-minute product information

The latest versions of the release notes are also available on the Web at **<http://www.bmc.com/support>**.

Conventions

The following conventions are used in this book:

- This book includes special elements called *notes*, *warnings*, *examples*, and *tips*:

Note

Notes provide additional information about the current subject.

Warning

Warnings alert you to situations that can cause problems, such as loss of data, if you do not follow instructions carefully.

Example

An example clarifies a concept discussed in text.

Tip

A tip provides useful information that may improve product performance or make procedures easier to follow.

- All syntax, operating system terms, and literal examples are presented in this typeface.
- In instructions, **boldface** type highlights information that you enter. File names, directories, and Web addresses also appear in boldface type.
- The symbol => connects items in a menu sequence. For example, **Actions => Create Test** instructs you to choose the Create Test command from the Actions menu.
- The symbol >> denotes one-step instructions.

- In syntax, path names, or system messages, *italic* text represents a variable, as shown in the following examples:

The table *table_name* is not available.

system/instance/file_name

- In syntax, the following additional conventions apply:
 - A vertical bar (|) separating items indicates that you must choose one item. In the following example, you would choose *a*, *b*, or *c*:

a | b | c
 - An ellipsis (. . .) indicates that you can repeat the preceding item or items as many times as necessary.
 - Square brackets ([]) around an item indicate that the item is optional.

Preinstallation Requirements

This chapter provides you with information that you will need to install the PATROL[®] Adapter for WBEM.

The following topics are discussed:

Installation Overview	1-2
Installation Requirements	1-2
System Requirements	1-2
PATROL Component Requirement	1-3
Installation Components	1-3

Installation Overview

The PATROL[®] Adapter for WBEM is installed on the Windows NT system. This chapter discusses the installation requirements for Windows NT and lists the components that are installed on your system.

Installation Requirements

This section provides you with the requirements and components that you will need to install the PATROL Adapter for WBEM. The target machine must meet the system and PATROL component requirements identified in this section.

System Requirements

Installation and use of the PATROL Adapter for WBEM requires that the items listed in Table 1-1 are installed on your system.

Table 1-1 System Requirements

Component	Version
Windows NT	4.0 for Intel x86 Service Pack 3 or greater
PATROL for Windows NT	3.2 or greater
Microsoft WMI/WBEM Core components*	build 525 or greater
*NOTE: Microsoft is now shipping the WMI/WBEM Core components with Microsoft NT 4.0 Service Pack 4 on the CD edition only. If you have installed this from the Microsoft NT 4.0 CD, you do not need to install the WMI core components separately.	

PATROL Component Requirement

You must have version 3.2 or later of the PATROL Agent™ installed on each computer. For further details, refer to the *PATROL Installation Guide for Windows NT*.

Installation Components

During PATROL Adapter for WBEM installation, the components listed in Table 1-2 are automatically installed.

Table 1-2 **Installation Components**

Component	Description
Schemas	.mof files imported into CIMOM
Providers	registered PATROL Instance Provider and PATROL Event Provider
KM2MOF Tool	Tool to compile .km files into .mof format
PATROL KM	PATROL WBEM KM used in the PATROL Console to retrieve data from CIMOM and to configure the PATROL providers
PSL API	PSL library files
Examples	WBEM-enabled PATROL KM and PATROL-enabled WBEM application examples that retrieve PATROL data
Uninstall files	pwa_uninst.isu and pwa_uninst.dll are copied to the c:\winnt directory
Documentation	Copies of the installation guide, user guide, reference manual, and release notes for the PATROL Adapter for WBEM in Adobe Acrobat reader format

PATROL Adapter for WBEM Installation

This chapter presents step-by-step instructions for installing and uninstalling the PATROL[®] Adapter for WBEM on a Windows NT system.

The following topics are discussed:

Overview	2-2
Installing on a Windows NT System.	2-2
Windows NT Installation Files	2-8
Uninstalling on a Windows NT System	2-11

Overview

This chapter presents step-by-step instructions for installing and uninstalling the PATROL Adapter for WBEM on a Windows NT system.

Installing on a Windows NT System

To install the PATROL Adapter for WBEM on a Windows NT system, perform the following steps:

Step 1 Ensure the following:

- PATROL is installed
- You are logged in to Windows NT with a valid username/password for connecting to CIMOM. During installation, the connection to CIMOM will be made using your current username/password.
- Microsoft WMI Core components are installed (see <http://msdn.microsoft.com/developer/sdk/wbemSdk/download.htm>) or Microsoft Windows NT 4.0 Service Pack 4 CD edition is installed

Note

The Microsoft WMI Core components are only included on the CD version of Windows NT 4.0 Service Pack 4. If you have downloaded Service Pack 4 from the web, you must install the Microsoft WMI Core components separately.

Step 2 From the PATROL Adapter for WBEM website, click on the link to the PATROL Adapter for WBEM product installation.

Step 3 Enter the location where you want your setup file to be downloaded or click **Next** to accept the default location.

The installation files are downloaded.

Step 4 From the Windows NT Explorer, double-click on **padw10b1.exe**.

The files are automatically uncompressed, setup begins and the Welcome dialog appears.

Step 5 Click **Next** to continue or click **Cancel** to quit the installation.

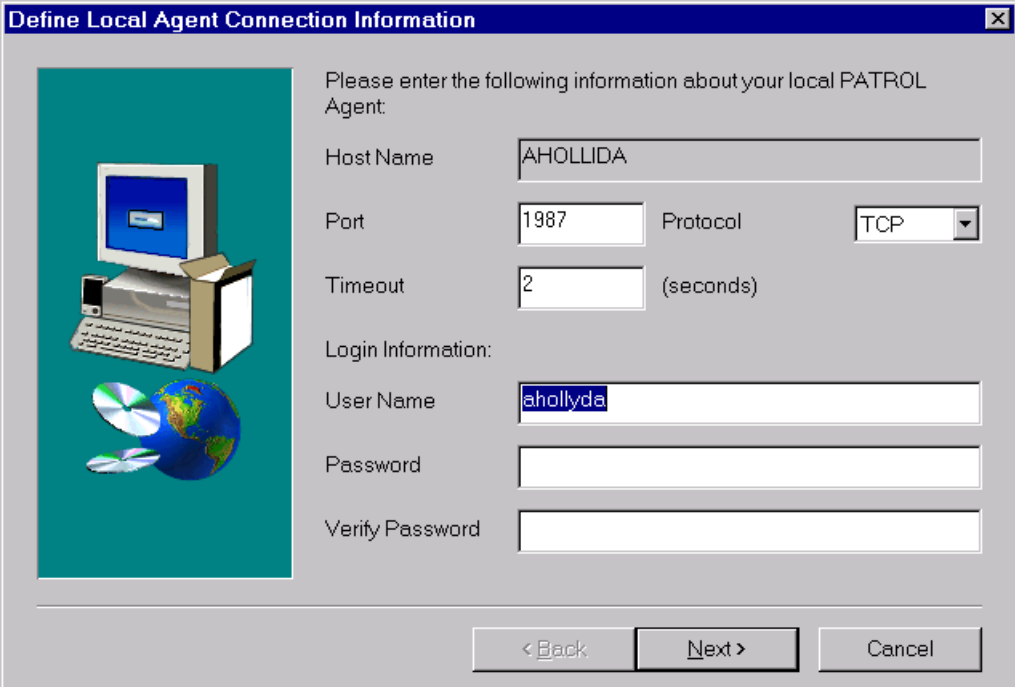
If a previous installation is detected a dialog appears indicating this.

Step 6 Click **Yes** to proceed with the install.

The Software License Agreement appears.

Step 7 Read the agreement. Click **Yes** to accept the terms of this agreement and continue with the installation.

The Define Local Agent Connection Information dialog appears.



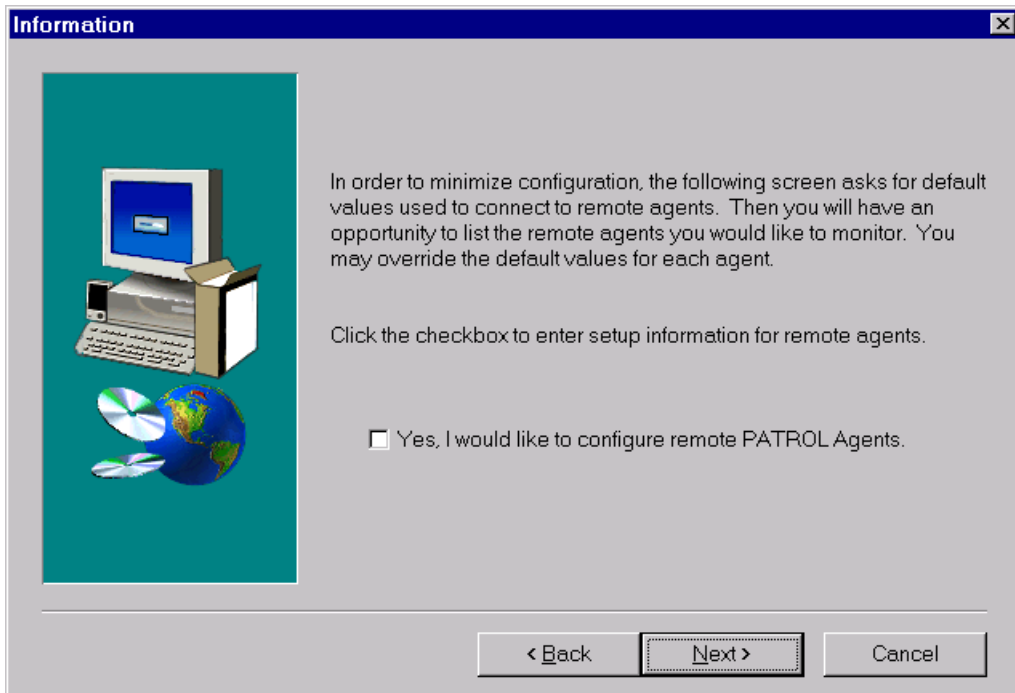
The dialog box is titled "Define Local Agent Connection Information". It contains a graphic on the left showing a computer monitor, keyboard, and a globe with two CD-ROMs. The main area contains the following fields and controls:

- Host Name: AHOLLIDA
- Port: 1987
- Protocol: TCP (dropdown menu)
- Timeout: 2 (seconds)
- Login Information:
 - User Name: ahollyda
 - Password: (empty field)
 - Verify Password: (empty field)

At the bottom are three buttons: "< Back", "Next >", and "Cancel".

- Step 8** Enter your local PATROL Agent™ and login information and click **Next**. You must enter your password twice to verify that you have entered it correctly.

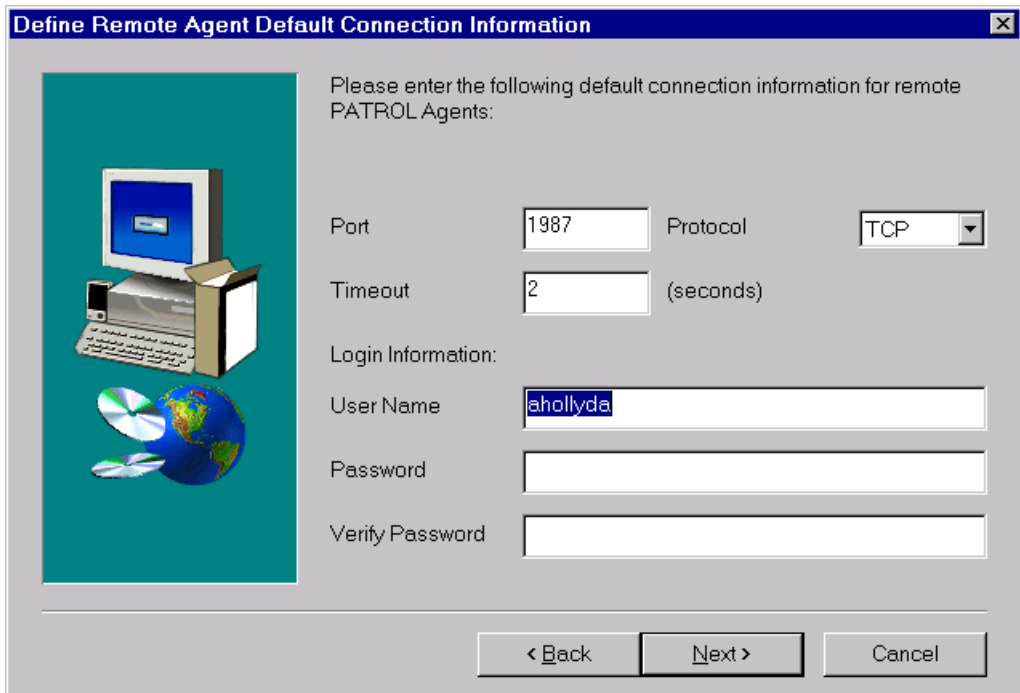
The Information dialog appears.



- Step 9** This dialog provides a checkbox to configure remote Agents:

- 9.A** If you are not connecting to remote Agents at this time, click **Next** to continue. You may connect to remote Agents after the installation is complete. The installation proceeds to Step 10 on page 2-8.
- 9.B** If you are monitoring remote Agents, click the checkbox to enter configuration information about those Agents, and then click **Next**.

The Define Remote Agent Default Connection Information dialog appears.



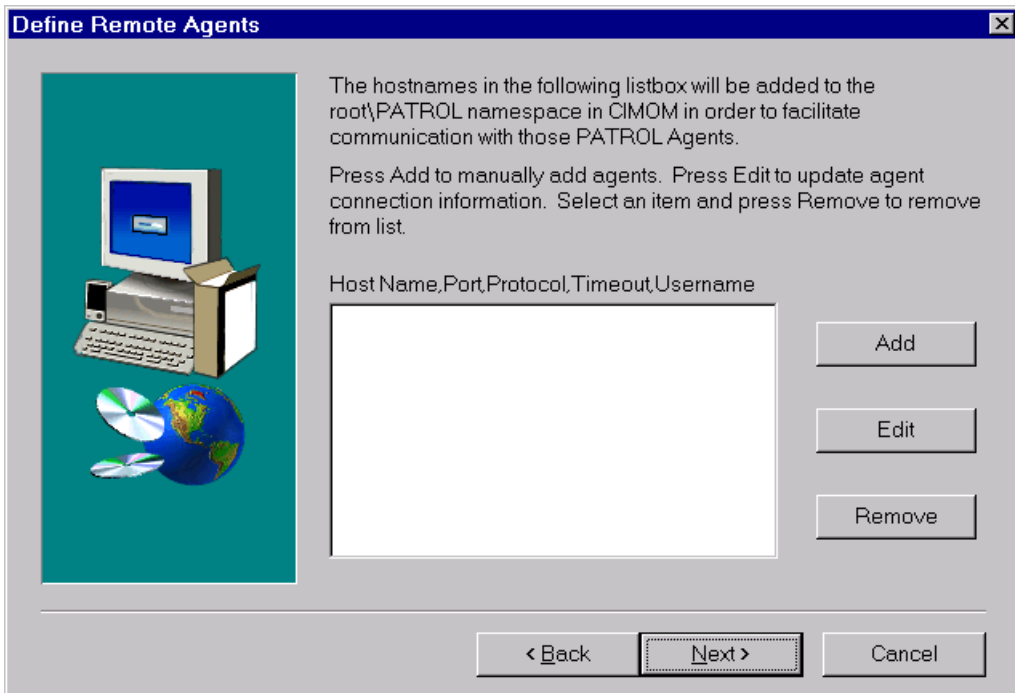
The dialog box is titled "Define Remote Agent Default Connection Information". It contains a graphic on the left showing a computer monitor, keyboard, and a globe with two CD-ROMs. The main area contains the following fields and controls:

- Text: "Please enter the following default connection information for remote PATROL Agents:"
- Port: Text box containing "1987"
- Protocol: Dropdown menu showing "TCP"
- Timeout: Text box containing "2" followed by "(seconds)"
- Login Information: Section header
- User Name: Text box containing "ahollyda"
- Password: Empty text box
- Verify Password: Empty text box
- Buttons: "< Back", "Next >", and "Cancel"

- 9.C** Enter the appropriate information to define the default connection information to a remote PATROL Agent. This dialog allows you to enter the default information once for all Agents. For optimal configuration, PATROL recommends that you set up all Agents with the same default port and user name.

- 9.D** Click **Next**.

The Define Remote Agents dialog appears.



9.E Do one of the following to facilitate communication with the remote PATROL Agents:

- Click **Add** to manually add PATROL Agents that you want to monitor.
- Highlight an Agent in the listbox and click **Edit** to update PATROL Agent connection information.
- Highlight an Agent in the listbox and click **Remove** to remove a PATROL Agent from this list.

9.F When you are finished configuring your PATROL Agents, click **Next** to continue.

The Start Copying Files dialog appears indicating that setup is ready to begin copying program files. These files are copied into the directory defined by the PATROL_HOME environment variable.

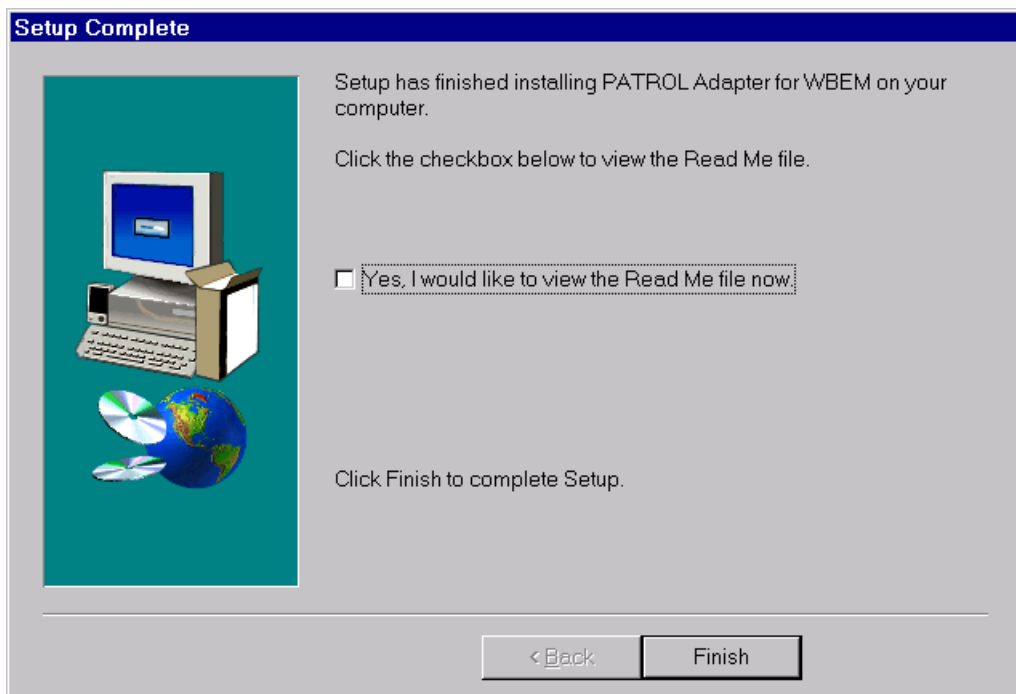
9.G To begin copying files, click **Next**.

The COM Servers used by the PATROL Adapter for WBEM are registered and CIMOM is automatically updated with your PATROL Adapter for WBEM data.

Note

If there is an error updating CIMOM, a dialog box will inform you. Validate that your connection to CIMOM is accurate and reinstall the PATROL Adapter for WBEM.

The Setup Complete dialog appears.



Step 10 If you would like to view the Readme file upon completion, click the checkbox.

Step 11 To complete the setup process, click **Finish**.

The PATROL Adapter for WBEM is installed. Directories and files installed on your machine are listed in Table 2-1.

Windows NT Installation Files

The installation files are placed in the directory that was specified during the installation process. It is organized into the following subdirectories:

Table 2-1 Windows NT Installation Files

File Name	Description
<Target Directory>\lib\wbem\tools	
pwinstpr.dll	PATROL Instance Provider
evtprov.dll	PATROL Event Provider
pemsvr.exe	PATROL PEM COM Server used by providers
msgdll.dll	string table used by providers
km2mof.exe	PATROL KM2MOF tool
km2mof.res	string table used by KM2MOF tool
pkmparser.dll	COM server used by KM2MOF tool
pwbem.xpc	PATROL PSL API server
<Target Directory>\lib\wbem\tools	
msvcrt.dll	Microsoft Visual C++ distributable dll
msvcirt.dll	Microsoft Visual C++ distributable dll
msvcp50.dll	Microsoft Visual C++ distributable dll
mfc42.dll	Microsoft Visual C++ distributable dll
msvbvm50.dll	Microsoft Visual Basic distributable dll

Table 2-1 Windows NT Installation Files

File Name	Description
<Target Directory>\lib\wbem\schemas	
patagent.mof	PATROL-generic schema file to import classes and instances into CIMOM
patcimv2.mof	CIMV2 schema file to import classes into root\PATROL namespace in CIMOM
patevent.mof	Event Provider schema file for provider registration and event class
patkm.mof	KM-specific schema file to import classes and instances into CIMOM
patremot.mof	defines PATROL namespace
<Target Directory>\lib\wbem\doc	
wbpul000.pdf	PATROL Adapter for WBEM User Guide
wbprl000.pdf	PATROL Adapter for WBEM Reference Manual
wbpi1000.pdf	PATROL Adapter for WBEM Installation Guide
wbpnr100.pdf	PATROL Adapter for WBEM Release Notes
<Target Directory>\lib\wbem	
readme.txt	readme file
<SystemRoot>	
pwa_uninst.isu	uninstall log file
pwa_uninst.dll	uninstall extension dll
<Target Directory>\lib\knowledge	
wbem.kml	PATROL Adapter for WBEM KM list file
wbem.km	PATROL Adapter for WBEM KM file
wbem_cimom.km	PATROL Adapter for WBEM KM file
wbem_namespace.km	PATROL Adapter for WBEM KM file
wbem_process.km	PATROL Adapter for WBEM KM file
wbem_provider.km	PATROL Adapter for WBEM KM file
<Target Directory>\lib\msgs	

Table 2-1 Windows NT Installation Files

File Name	Description
wbem.msg	PATROL Adapter for WBEM message file
util.msg	PATROL Adapter for WBEM message file
<Target Directory>\lib\psl	
pwbemlib.lib	PATROL Adapter for WBEM PSL library file
utlutl.lib	PATROL Adapter for WBEM PSL library file
utmsgsl.lib	PATROL Adapter for WBEM PSL library file
utstdmsgsl.lib	PATROL Adapter for WBEM PSL library file
utstrl.lib	PATROL Adapter for WBEM PSL library file
wbemutil.lib	PATROL Adapter for WBEM PSL library file
wbemcmdagentadd.psl	PATROL Adapter for WBEM PSL file
wbemcmdagentdefaults.psl	PATROL Adapter for WBEM PSL file
wbemcmdagentdelete.psl	PATROL Adapter for WBEM PSL file
wbemcmdagentdetails.psl	PATROL Adapter for WBEM PSL file
wbemcmdagentmodify.psl	PATROL Adapter for WBEM PSL file
wbemcmdcimomstart.psl	PATROL Adapter for WBEM PSL file
wbemcmdcimomstop.psl	PATROL Adapter for WBEM PSL file
wbemcmdconfig.psl	PATROL Adapter for WBEM PSL file
wbemcmdkmdetails.psl	PATROL Adapter for WBEM PSL file
wbemcmdloadkm.psl	PATROL Adapter for WBEM PSL file
wbemcmdloadmof.psl	PATROL Adapter for WBEM PSL file
wbemcmdprovdetails.psl	PATROL Adapter for WBEM PSL file
wbemcmdquery.psl	PATROL Adapter for WBEM PSL file
wbemcmdunloadkm.psl	PATROL Adapter for WBEM PSL file
wbemdiscovery.psl	PATROL Adapter for WBEM PSL file
wbemprmproccoll.psl	PATROL Adapter for WBEM PSL file

Uninstalling on a Windows NT System

The uninstall procedure connects to CIMOM to uninstall the PATROL Adapter for WBEM components. Before uninstallation, ensure that the following processes are not running:

- CIMOM
- PATROL Agent

To uninstall the PATROL Adapter for WBEM on a Windows NT system, perform the following steps:

Step 1 From the Windows NT main window, choose **Start => Settings => Control Panel**.

The Control Panel dialog appears.

Step 2 Double-click on **Add/Remove Programs**.

The Add/Remove Programs Properties dialog appears.

Step 3 Highlight the PATROL Adapter for WBEM and click **Add/Remove....**

The PATROL Adapter for WBEM Uninstall dialog appears.

Step 4 Click **Yes** to remove the PATROL Adapter for WBEM.

The Remove Programs From Your Computer dialog appears while the files are being removed from your machine.

Step 5 Click **OK**.

Note

If there is an error connecting to CIMOM, a dialog box will inform you and the uninstall will fail.

The PATROL Adapter for WBEM and all its components are uninstalled.

Index

A

adding a remote PATROL Agent 2-6

C

components, installation 1-3
configuring remote agents 2-4

D

dialog boxes
 Define Local Agent Connection
 Information 2-3
 Define Remote Agent Default
 Connection Information 2-4
 Define Remote Agents 2-5
documentation, product 1-3

E

editing a remote PATROL Agent 2-6
evtprov.dll 2-8

examples 1-3

I

installation
 components list 1-3
 files list 2-8
 on Windows NT 2-2
 overview 1-2
 PATROL component requirements 1-3
 requirements 1-2
 uninstalling 2-11
 Windows NT 1-2

K

KM2MOF tool 1-3
km2mof.exe 2-8
km2mof.res 2-8

M

mfc42.dll 2-8
msgdll.dll 2-8
msvbvm50.dll 2-8
msvcirt.dll 2-8

msvcp50.dll 2-8
msvcrt.dll 2-8

P

patagent.mof 2-9
patcimv2.mof 2-9
patevent.mof 2-9
patkm.mof 2-9
patremot.mof 2-9
PATROLWBEM KM 1-3
pemsrv.exe 2-8
pkmparser.dll 2-8
providers
 PATROL Providers 1-3
PSL API files 1-3
pwa_uninst.dll 2-9
pwa_uninst.isu 2-9
pwbem.xpc 2-8
pwbemlib.lib 2-10
pwinstpr.dll 2-8

R

readme.txt 2-9
remote agents 2-4
removing a remote PATROL Agent 2-6
requirements
 PATROL components 1-3
 system 1-2

S

schemas 1-3
system requirements 1-2

U

uninstallation
 on Windows NT 2-11
 procedure 2-11
 uninstall files 1-3
util.msg 2-10
utlutil.lib 2-10
utmsgsl.lib 2-10
utstdmsgsl.lib 2-10
utstrl.lib 2-10

W

wbem.km 2-9
wbem.kml 2-9
wbem.msg 2-10
wbem_cimom.km 2-9
wbem_namespace.km 2-9
wbem_process.km 2-9
wbem_provider.km 2-9
wbemcmdagentadd.psl 2-10
wbemcmdagentdefaults.psl 2-10
wbemcmdagentdelete.psl 2-10
wbemcmdagentdetails.psl 2-10
wbemcmdagentmodify.psl 2-10
wbemcmdcimomstart.psl 2-10
wbemcmdcimomstop.psl 2-10
wbemcmdconfig.psl 2-10
wbemcmdkmdetails.psl 2-10
wbemcmdloadkm.psl 2-10
wbemcmdloadmof.psl 2-10
wbemcmdprovdetails.psl 2-10
wbemcmdquery.psl 2-10
wbemcmdunloadkm.psl 2-10
wbemdiscovery.psl 2-10
wbemprmproccoll.psl 2-10
wbemutil.lib 2-10
wbpi1000.pdf 2-9

- wbpr100.pdf 2-9
- wbpr1000.pdf 2-9
- wbpu1000.pdf 2-9
- Windows NT 1-2
 - installation 2-2
 - installation files 2-8
 - installation files table 2-8
 - uninstallation 2-11

